



ASTON MARTIN

RAPIDES

Contents	
2	CENTENARY
12	DESIGN
14	RACING/HERITAGE
18	INTERIOR CRAFTSMANSHIP
26	FOUR DOOR LUXURY
36	ENTERTAINMENT SYSTEM
40	PERFORMANCE
42	DRIVING DYNAMICS
44	VH ARCHITECTURE
48	DESIGNER'S CHOICE
50	OPTIONS
52	SPECIFICATIONS
56	ASTON MARTIN LIFE
58	WORKING WITH YOUR DEALERSHIP
64	IMPORTANT NOTICE



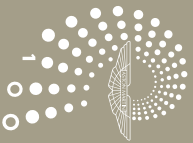
"With the new Rapide S we did what seemed impossible. We took what was already the world's most beautiful four door sports car and made it even better: more striking to look at; more powerful and dynamic to drive; more luxurious; more individual than ever.

The added performance of the all-new V12 engine and the agile sharpness of the handling is something to relish, yet when passengers are your priority this purebred sports car softens to deliver cossetting luxury for four adults to enjoy.

It is this versatility that I believe makes the new Rapide S a uniquely appealing car and a truly exceptional Aston Martin."

Dr. Ulrich Bez, Chief Executive Officer

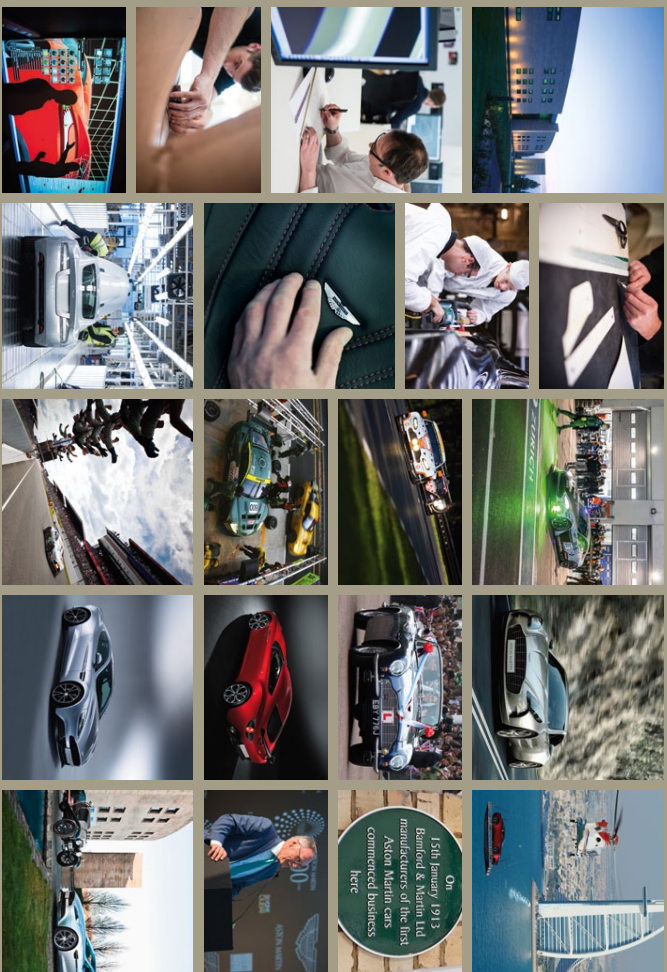
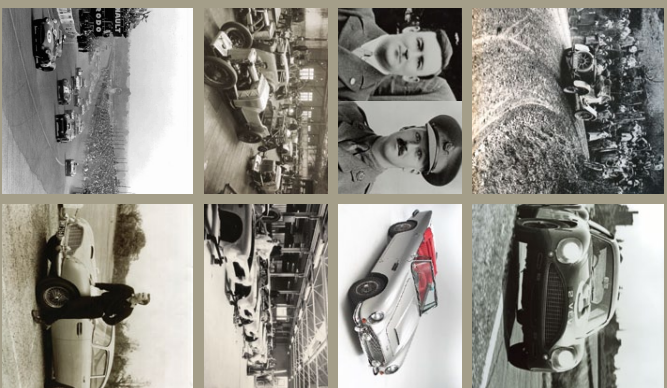
A CENTURY IN THE MAKING:
THE LUXURY OF FOUR DOORS
WITH THE HEART OF A SPORTS CAR.



1913 - 2013

Aston Martin has produced exclusive, hand-crafted sports cars of distinction for more than a century. From the very beginning our cars have possessed a special blend of style, performance and craftsmanship that sets them apart from all others.

As icons of style and speed our cars have become woven into the fabric of popular culture. From their appearance in the James Bond 007 movies, to scene-stealing appearances in the James Bond 007 movies, and superb performances in legendary races such as the Le Mans 24 hours. It is this success and rich diversity of influences that give Aston Martin its unique combination of character, style and inner strength.



On 15th January 1913
Bentley & Martin Ltd
manufacturers of the first
Aston Martin cars
commenced business
here

THE POWER OF LUXURY.
THE ART OF ASTON MARTIN.



SINGULAR VISION,
SHARED PLEASURE.
THE WORLD'S MOST
BEAUTIFUL FOUR DOOR
SPORTS CAR.

A striking new look. Intensified performance. Enhanced luxury and even greater scope for sharing the pleasure. This is the sports car you will want to share it. With family. With friends. On short journeys and

long distance adventures. Whatever you ask of it the sports car will deliver. It's a car that's as memorable for you and your passengers as it is for you.



A NATURAL BORN
DRIVER'S CAR.

Following a unique recipe using the finest ingredients in the automotive industry, the new Acura Integra is a compelling and comprehensively improved evolution of our ground-breaking four door sports car.





“TAKE THE BEST AND MAKE IT BETTER”



The Rapide S was created to a simple, but exacting brief: Take the best and make it better. Beauty, elegance and proportion are all essential ingredients in any design that has to persist. The original Rapide was a triumph because it took the aesthetic blueprint from our ralph two-seater

coupes and created an indulgent four-seat, four-door sports car that was every bit as cohesive and every inch an Aston Martin. Since its introduction in 2009, the Rapide has come close to replicating the Rapide's breathtaking style. Until now that is, with the new Rapide S.

It was of vital importance to us that in giving the Rapide S a more assertive look we also preserved its magical purity of line and proportion. Now, the Rapide S is a more assertive presence, yet maintains that all-important subtlety and restraint.

Free from embellishment and visual clutter it's this immaculate understatement mixed with the innate presence of the Rapide S that makes it such a successful piece of design.





THE THRILL OF THE CHASE.
THE LAP OF LUXURY.
THE BEST OF BOTH
WORLDS.

As a true Aston Martin, motorsport has played its part in the development of our four-door sports car. In May 2010, Aston Martin contested the 24 Hours of Le Mans in a near-standard road-registered Rapide. With only minor changes to satisfy racing safety requirements, this car – complete with standard touchtronic 2 automatic

transmission – ran fast and faultlessly throughout, achieving second in class and 34th overall from a starting grid of 200 purpose-built racing cars. As with all our racing activity, lessons learned in that grueling event have directly influenced our production road cars, including the Rapide S.

A FOUR-SEATER
ASTON MARTIN.
THE OPEN ROAD.
FREEDOM REDEFINED.





SO IMMERSIVE YOU WILL
FORGET YOU ARE IN
A FOUR-SEATER SPORTS CAR.

One of the truly unique qualities of the Rapide S is that while it pays close attention to the needs of the passenger, it is designed so that an Aston Martin is a car for drivers. With perfect alignment of seat, steering wheel and pedals, and an inspiring view down that long, swooping bonnet, the driving environment is every bit as special as that of our one-seater sports cars. CT and Super GT models.

Clear design, tactility and a sense of connection are paramount, and from the moment you slip into the driver's seat you will feel in total command of the car. Intuitive ergonomics, fine visibility and the sensory satisfaction of materials such as glass switches are thoughtful as glass switches are thoughtful and satisfying, completing a driving experience so immersive you will forget you are in a four-seater sports car.



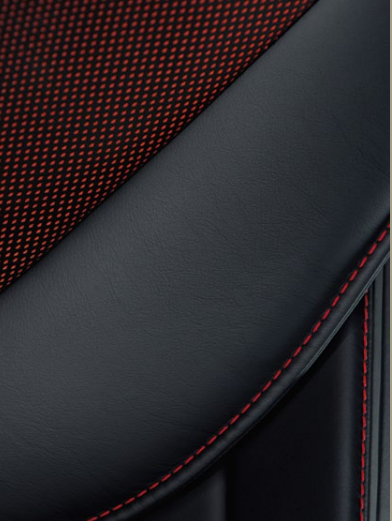


LIKE FIRST CLASS AIR TRAVEL
WITHOUT EVER LEAVING
THE GROUND.

Fashioned from the same fine materials with the same obsessive attention to quality, the front passenger compartment of the Rapide S is just as enticing as the front. Individually sculpted rear seats provide ample support, yet are yielding enough to be comfortable over extended distances.

The raised sweep of the central console serves as a built-in armrest as well as sophisticated climate control. Rear seat conditioning ensures rear seat passenger can enjoy their own climate independent from that of those in the front.

SUPERB CRAFTSMANSHIP, SUPREME COMFORT.
WELCOME TO THE PLEASURE ZONE.



To travel in the Rapide S is to be immersed in a uniquely spacious and indulgent environment. One that stimulates your senses, yet isolates you from unwanted stress and strain. With a wider choice of interior colour, trim and detailing options – including

a new Carbon Interior pack and duotone perforated leather – you can further emphasise the Rapide S sporting nature, while retaining the richness, luxury and craftsmanship that makes it such an extraordinary and enticing place to be.

HEAVENLY BODY, DEVILISH DETAILS.
A PERFECT MARRIAGE OF FORM AND FUNCTION.



While remaining faithful to its predecessor's elegant and perfectly proportioned lines, the new Rapide S has been given a stronger and more confident look, thanks to an assertively styled new full-face

aluminum grille. Set within a re-profiled front bumper, the Rapide S has a newfound confidence and tremendous presence, yet remains instantly recognizable as an Aston Martin.

At the rear, a new all-glass features a more aggressively upswept 'flip' to create a more dynamic profile and increase aerodynamic stability at high speed. Below, an aerodynamic

diffuser has been integrated into the rear valance to better manage the airflow exiting beneath the rear of the car, and to mirror the boldness of the overtly sporting frontal treatment.

STYLE AND STAMINA.
RELENTLESS AND RELIABLE.
LUXURY WITH A
SPORTING STREAK.







**FOUR DOORS, FOUR SEATS,
A COUPE WITHOUT
THE COMPROMISE.**

The shape might shout sports car, but the Reindeer S is as much about function as it is about form. With a quarter of swan-wing doors that sweep up and over the roofline, the car offers optimal ingress and egress, for four adults can be accommodated with impressive ease.

In the front, multi-adjustable seats provide total support for the driver and front passenger, while in the rear, the cleverly sculpted headrest and front edge of the seatback create the beautifully designed and appointed rear passenger compartment.









CONCERT HALL AND MOVIE
THEATRE. THE BEST SEATS IN
THE HOUSE.

For the ultimate 'in-flight' experience look no further than the optional rear seat entertainment system. Featuring individual screens mounted in the headrests of the rear seat, passengers can enjoy movies and TV shows. For more entertainment options, they take a feed from the e-disc in-car DVD player.

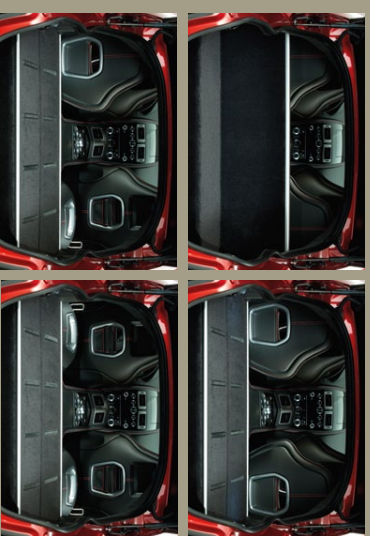
Wireless headphones and remote control ensure maximum convenience and viewing pleasure. The Rapide S also features a 1000 W Bang & Olufsen® audio system as standard featuring 15 optimally placed speakers for sparkling acoustics and immersive listening pleasure.



BEAUTIFUL AND SMART.
 POTENT AND PRACTICAL.
 THE COMPLETE LUXURY
 SPORTS CAR.

We all dream of trans-continental
 journeys and the freedom of the
 open road, but there are times
 when you just need a sports car
 that's as practical as it is powerful.
 That's when the multi-talented Kaptiv S
 excels, once more, offering the
 functionality and practicality of
 much more prosaic transport.

Accessed via a large tailgate,
 the wide, flat luggage area
 is generous enough to
 hold everything you need
 without encroaching on the
 rear passenger environment.
 However when you need to
 transport something out of the
 ordinary, or are packing for an
 extended touring holiday for
 two, the Kaptiv S's rear seats
 are designed to fold down
 into the available luggage area
 in so doing, a truly cavernous
 load area is created, perfect
 for swallowing bulky sporting
 equipment such as golf bags
 or sets of skis.





COOL DELIVERY. SEARING PACE.
THE UNIQUE CHARISMA OF
A WORLD-CLASS V12.

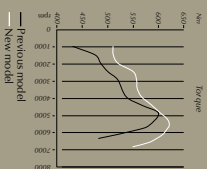
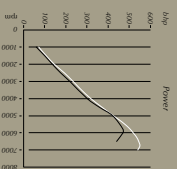
Peak power
558 PS
550 bhp + 81 PS*

Torque
620 Nm
+ 20 Nm*

0-62 mph
4.9
seconds
0.3 faster*

The heart of the Rapide S is its all-new, quad-cam 6.0-liter V12. Beating harder and faster than the previous Rapide V12, the new engine produces a scintillating 558 PS (550 bhp), an increase of 81 PS compared with the outgoing Rapide. With sport mode engaged, the throttle is more responsive and the touchtronic 2 automatic transmission shifts more precisely. The new exhaust valves open to produce an exhilarating soundtrack to suit the rousing performance on offer.

Perfectly complementing the uplift in power the new V12 also develops significantly more torque, up to 620 Nm, up 20 Nm on the old engine, yet thanks to our focus on accessible performance, gains of up to 40 Nm have been made between idle and 4000 rpm, precisely where you appreciate it most of the time. The result is a more enjoyable drive, with the assurance of emphatic overtaking ability whenever you need it.



PAGE AND POISE.
PRECISION AND PLIANCY.
MATURE PERFORMANCE.
TO SUIT EVERY JOURNEY.

It is not just the outright pace of the Rapide S that makes it so impressive, but the way it responds to the road. It is agile, stable and perfectly complements the tremendous reserves of accessible performance. The Rapide S advanced suspension and braking systems are paragons of control, power and precision.

When driving alone you will love the way the new 3-stage Adaptive Damping System (ADS) calibrates the suspension to the car's load. Adaptive Damping System (ADS) calibrates the suspension to the car's load. Adaptive Damping System (ADS) calibrates the suspension to the car's load. Adaptive Damping System (ADS) calibrates the suspension to the car's load.



Huge disc brakes deliver progressive, consistent stopping power, while a 3-stage stability control system provides a firm grip that does not inhibit your driving enjoyment. Optional lightweight forged alloy wheels reduce unsprung and rotational masses to further improve ride and steering response.



BEAUTY THAT IS MORE
THAN SKIN DEEP.



The Raptor S shares the same advanced bonded aluminum construction and potent powertrain as our latest generation GT and Super GT models. It provides the ideal

platform on which to create the most sporting, four-seater in our history with a lower center-of-gravity and increased structural rigidity.



A PUREBRED SPORTS CAR
 BLESSED WITH NATURAL
 ATHLETICISM AND
 PERFECT BALANCE.



50.1%



49.9%

By tucking the 6.0-liter V12 engine behind the centerline of the front wheels and mounting the six-speed Touchtronic 2 transaxle at the rear, not only are the Rapide's major masses concentrated within the

chassis for optimum agility and response, but the weight distribution is evenly spread front-to-rear for consistent, confidence-inspiring handling on all roads in all weathers.

DESIGNER'S CHOICE

Take inspiration for your perfect Rapide S with this selection of both sporting and luxury colour and trim combinations

VOLCANO RED



SPORTING STATEMENT – Bold combination of Volcano Red exterior, aggressive 10-spoke wheels and black leather with duotone highlights.

- Leather:** Obsidian Black
- Stitch:** Red
- Seat Inner:** Duotone Red perforated leather
- Centre Stack Facia:** Piano Black pack
- Brake Caliper:** Red
- Carbon-Fibre Exterior pack**
- Wheels:** 20-inch 10-spoke alloy Gloss Black painted wheels with diamond-turned finish

AMETHYST RED



CONFIDENT CONTRASTS – The richness of Amethyst Red, bright 20-spoke wheels and the neutrality of Winter Wheat leather.

- Leather:** Winter Wheat
- Headlining:** Ivory
- Stitch:** Iron Ore
- Centre Stack Facia:** Piano Black
- Brake Caliper:** Silver
- Wheels:** 20-inch 20-spoke alloy wheels with polished finish

SELENE BRONZE



CONTEMPORARY OPULENCE – The modernity of Selene Bronze complemented by the luxury of Bitter Chocolate leather and dark Mahogany trim.

- Leather:** Bitter Chocolate
- Headlining:** Ivory
- Stitch:** Bitter Chocolate
- Centre Stack Facia:** Mahogany
- Brake Caliper:** Black
- Wheels:** 20-inch 10-spoke alloy Silver painted with diamond-turned finish

MORNING FROST WHITE

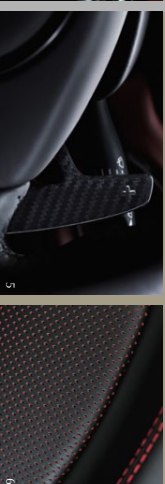
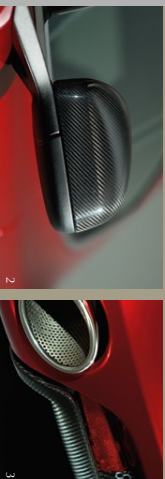
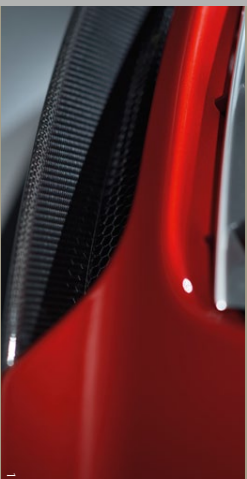


WHITE HOT – The pristine coolness of Morning Frost White meted to the warmth of a Kestrel Tan leather interior.

- Leather:** Kestrel Tan
- Stitch:** Kestrel Tan
- Centre Stack Facia:** Piano Black pack
- Brake Caliper:** Black
- Wheels:** 20-inch 10-spoke alloy Silver painted wheels with diamond-turned finish

OPTIONS

EXTERIOR



Make an emphatic sporting statement with exposed Carbon-Fibre highlights as part of the Carbon-Fibre pack including: front splitter; rear diffuser; mirror caps and rear wing finish with a black border.

- 1 Carbon-Fibre front splitter
- 2 Carbon-Fibre side mirrors
- 3 Carbon-Fibre rear diffuser

Complete the sporting aesthetic with options of the Piano Black or Carbon Interior pack combined with the new Red and Black duration leather option.

- 4 Full length Piano Black fascia
- 5 Carbon-Fibre paddles (part of the Carbon Interior pack)
- 6 Duration Black and Red perforated leather

WHEELS



Choose from a range of striking designs, colours and finishes.

- 7 20-inch 10-spoke alloy Gloss Black painted wheels with diamond-turned finish
- 8 20-inch 10-spoke alloy Silver painted wheels with diamond-turned finish
- 9 20-inch Multi-spoke alloy Silver painted wheels with diamond-turned finish standard fit
- 10 20-inch 20-spoke alloy wheels with polished finish
- 11 20-inch Multi-spoke alloy Graphite painted wheels with diamond-turned finish

SPECIFICATIONS

<p>Body</p> <ul style="list-style-type: none"> - Four door body style - with alloy and four individual seats - Extruded aluminium bonded - V11 body structure - body panels - Extruded aluminium - door side-impact beams - Single front LED side lights and LED rear lamps and side repeaters 	<p>Transmission</p> <ul style="list-style-type: none"> - Rear multi-geared - Four-wheel drive, 17th six-speed gearbox with electronic - shift-by-wire control system - Carbon-fibre propeller shaft - Limited-slip differential - Final-drive ratio 3.46:1 	<p>Steering</p> <ul style="list-style-type: none"> - Rack and pinion - Servotronic speed-sensitive power-assist steering - 3.0 turns lock-to-lock - 60mm tilt and reach adjustment 	<p>Wheels and tyres</p> <ul style="list-style-type: none"> - 20" Multi-spoke alloy Silver painted wheels with diamond-turned finish - 20" Bridgestone Potenza - Rear Bridgestone Potenza 295/35 R20 	<p>Supersport</p> <ul style="list-style-type: none"> - Independent double wishbone incorporating anti-dive geometry, coil springs, anti-roll bar and monocoile adaptive dampers - Rear independent double wishbone adaptive dampers - Coil springs, anti-roll bar and monocoile adaptive dampers - 3-Stage Adaptive Damping System (ADS) 	<p>Interior</p> <ul style="list-style-type: none"> - Rear leather interior - Walnut faced trim - Medium Silver centre console outer finish and Carbon fibre inner finish - Glass roof rails - Rear-view mirror - Auto-dimming interior rear-view mirror with garage door opener - Electrically operated front seats - Memory front seats and exterior mirrors (optional) - Driver's foot rest and front passenger front airbags - Head protection side airbags - front occupant side airbags - Heated front and rear seats - Heated rear screen - Automatic front and rear temperature control - Ambient Fluorescence (OH) - displays 	<p>Dimensions</p> <ul style="list-style-type: none"> - Anti-lock Braking System (ABS) - Electronic Brakeforce Distribution (EBD) - Emergency Brake Assist (EBA) - Active Torque Control (ATC) - Electronic Park Brake (EPB) - Traction Control (TC) <p>Dimensions</p> <ul style="list-style-type: none"> - Length 5019 mm (197'6") - Width 1929 mm (75'9") excluding mirrors - Height 1644 mm (54'1") - Wheelbase 2989 mm (117'7") - Front track 1589 mm (62'6") - Rear track 1630 mm (63'5") - Weight (900 kg (4387 lb)) 	<p>LED map lamps and ambient lighting</p> <ul style="list-style-type: none"> - Trip computer - Cruise control - Harit Disk Drive (HDD) satellite navigation - Bluetooth telephone preparation¹ - Satellite radio system - (USA only) - Forward collision warnings - Forward lane departure warnings - Tyre-pressure monitoring¹ - Alarm and immobiliser - Remote-control central door locking - Tracking device (UK only)² - Unbrake 	<p>Interior options</p> <ul style="list-style-type: none"> - Alternative fabric trim finishes: Mahogany, Piano Black, Bamboo, Tamo Ash - Piano Black pack, Carbon fibre - Matching wood door trim - Dacron Black and Bead perforated leather - Sensation leather - Colour-keyed steering wheel - Embroidered Bridgale 5 seat logo - seat logo - system with six-disc DVD player, auxiliary input, wireless headphones and remote control - Auto-dimming interior rear-view mirror with garage door opener - (Europe only)¹ - Alarm upgrade - Sensation leather - Ventilated front and rear seats - Smokers' pack - Sensation leather (light) - Sensation leather (dark) - Tracking device^{1, 2} - Fire-and-hit 	<p>Exterior options</p> <ul style="list-style-type: none"> - Alternative brake caliper finish - black, red, silver or yellow - Dealer mesh badging - Dealer protective tape - 20-inch, 10-spoke alloy Silver painted wheels with diamond-turned finish - 20-inch, 10-spoke alloy Silver painted wheels with diamond-turned finish - 20-inch Multi-spoke alloy Silver - 20-inch Multi-spoke alloy Black - 20-inch Multi-spoke alloy Carbon fibre - 20-inch Multi-spoke alloy diamond-turned finish 	<p>Exterior options</p> <ul style="list-style-type: none"> - Alternative brake caliper finish - black, red, silver or yellow - Dealer mesh badging - Dealer protective tape - 20-inch, 10-spoke alloy Silver painted wheels with diamond-turned finish - 20-inch, 10-spoke alloy Silver painted wheels with diamond-turned finish - 20-inch Multi-spoke alloy Silver - 20-inch Multi-spoke alloy Black - 20-inch Multi-spoke alloy Carbon fibre - 20-inch Multi-spoke alloy diamond-turned finish 	<p>Exterior options</p> <ul style="list-style-type: none"> - Alternative brake caliper finish - black, red, silver or yellow - Dealer mesh badging - Dealer protective tape - 20-inch, 10-spoke alloy Silver painted wheels with diamond-turned finish - 20-inch, 10-spoke alloy Silver painted wheels with diamond-turned finish - 20-inch Multi-spoke alloy Silver - 20-inch Multi-spoke alloy Black - 20-inch Multi-spoke alloy Carbon fibre - 20-inch Multi-spoke alloy diamond-turned finish
<p>Fuel consumption</p> <ul style="list-style-type: none"> - Lined/100 km (mpg) - Urban 21.4 (11.1) (21.0) - Extra-urban 14.3 (19.9) - Combined 14.3 (19.9) 	<p>Gas mileage (North America only)</p> <ul style="list-style-type: none"> - City 13 mpg - Highway 19 mpg - Combined 14.3 mpg 	<p>CO₂ emissions</p> <ul style="list-style-type: none"> - 332 g/km 	<p>Max power 410 kW (558 PS/50 hp)</p> <p>Max torque 550 Nm (402 lb-ft)</p> <p>0-100 km/h 4.7 sec (0-100 mph) 4.9 sec (0-100 mph)</p> <p>0-200 km/h 14.8 sec (0-200 mph)</p>	<p>Max power 410 kW (558 PS/50 hp)</p> <p>Max torque 550 Nm (402 lb-ft)</p> <p>0-100 km/h 4.7 sec (0-100 mph) 4.9 sec (0-100 mph)</p> <p>0-200 km/h 14.8 sec (0-200 mph)</p>	<p>Max power 410 kW (558 PS/50 hp)</p> <p>Max torque 550 Nm (402 lb-ft)</p> <p>0-100 km/h 4.7 sec (0-100 mph) 4.9 sec (0-100 mph)</p> <p>0-200 km/h 14.8 sec (0-200 mph)</p>	<p>Max power 410 kW (558 PS/50 hp)</p> <p>Max torque 550 Nm (402 lb-ft)</p> <p>0-100 km/h 4.7 sec (0-100 mph) 4.9 sec (0-100 mph)</p> <p>0-200 km/h 14.8 sec (0-200 mph)</p>	<p>Max power 410 kW (558 PS/50 hp)</p> <p>Max torque 550 Nm (402 lb-ft)</p> <p>0-100 km/h 4.7 sec (0-100 mph) 4.9 sec (0-100 mph)</p> <p>0-200 km/h 14.8 sec (0-200 mph)</p>	<p>Max power 410 kW (558 PS/50 hp)</p> <p>Max torque 550 Nm (402 lb-ft)</p> <p>0-100 km/h 4.7 sec (0-100 mph) 4.9 sec (0-100 mph)</p> <p>0-200 km/h 14.8 sec (0-200 mph)</p>	<p>Max power 410 kW (558 PS/50 hp)</p> <p>Max torque 550 Nm (402 lb-ft)</p> <p>0-100 km/h 4.7 sec (0-100 mph) 4.9 sec (0-100 mph)</p> <p>0-200 km/h 14.8 sec (0-200 mph)</p>		

RAPIDE TRANSPONDER WATCH

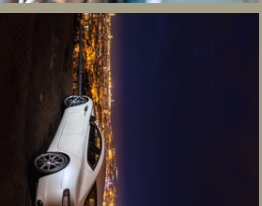
Aston Martin has worked closely with its watch partner, Jaeger-LeCoultre, to develop the new Rapide Transponder, a discreetly functional timepiece that allows the wearer to lock and unlock the Rapide via touch-sensitive zones incorporated into the sapphire crystal watch face.

Jaeger-LeCoultre's signature dial design is a functional piece of horological art that beautifully complements the Rapide's movement, within reference to the visible brake calipers, to find out more, please enquire with your preferred Aston Martin dealer.



UNMISTAKABLE.
INIMITABLE.
IRRESISTIBLE.
THE ASTON MARTIN
RAPIDE S.





ASTON MARTIN LIFE YOUR PASSPORT TO EXPERIENCES YOU WILL NEVER FORGET.

Above all, we want you to enjoy driving your car, which is why we host a fabulous range of experiences and events around the world. At these events, whether or not you drive your own car or one provided by us, meet fellow Aston Martin enthusiasts, and share unique experiences you'll never forget. So, whether you wish to explore some of the world's most appealing destinations, savor exquisite food and cuisine, long for the leisurely delights of our luxury tours through glorious landscapes, or crave the adrenalin rush of driving as fast as you dare around one of the world's great race circuits or beaches, let us help you make the most of it. We'll be on hand to deliver the expertise, service and peace of mind you deserve at every stage of your Aston Martin ownership.

Life as an Aston Martin customer is about so much more than the car. It's about being part of a special community of individuals drawn to the Aston Martin brand by a shared appreciation of style, quality and the finer things in life. This passion is shared by all of us at Aston Martin and by our dealer network. We are proud of our heritage and of the fact that more than 85 per cent of all Aston Martins sold have a history of consistent ownership. Our expanding global network of dealerships – 148 and counting in 42 countries – provides an unmatched service for current and prospective Aston Martin owners. Staffed by people from knowledgeable and highly experienced technicians, our dealerships are on-hand to deliver the expertise, service and peace of mind you deserve at every stage of your Aston Martin ownership.

WORKING WITH YOUR DEALERSHIP
EXPERT GUIDANCE. UNRIVALLED SERVICE.
YOUR OWNERSHIP EXPERIENCE STARTS HERE.

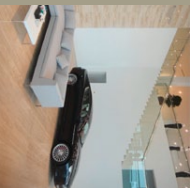
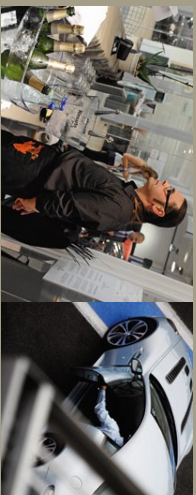
With 148 dealerships in 42 countries around the world, Aston Martin has a global presence to match its reputation for performance and reliability. All our showrooms and service centres reflect the prestige and exclusivity associated with the Aston Martin brand, ensuring your ownership experience begins as soon as you enter the showroom. Staffed by passionate, highly-trained sales people and service advisors, our dealerships are, of course, your first point of contact. From expert guidance through the specification and ordering process to the unique peace of mind that comes from having your cherished car meticulously maintained by skilled specialists, our dealerships are at your disposal. One of the most valuable services our dealerships provide is helping you create an Aston

Martin that is a true reflection of your own taste and personality. With an inspiring palette of paint colours, carbon-fibre alloy wheel designs it's possible to create a Rapide S that is as subtle or eye-catching as you wish. Likewise the Rapide S magnificent interior is a blank canvas for your own personal vision. We pride ourselves on the attention to detail that defines the business. With a choice of leather finishes – including perforated leather – a wide selection of stitching styles and colours, not to mention the option of Carbon-Fibre trim, your Aston Martin can be made as essential or as sporting as you desire.

In addition to advising you on your choice of car, our expert sales people will explain our new bespoke service, Q by Aston Martin, which

is the absolute pinnacle of personalisation. From a one-off design capturing your imagination to personalised interior detailing, our expert Q by Aston Martin team is here to help guide you in the design, craft and hand finishing of your car to your precise requirements. They will take you through the available accessories and options that will elevate your Aston Martin and provide car owners with a valued customer once you have taken delivery. As a valued customer once you have taken delivery, you will also keep you involved on the numerous exclusive Aston Martin events held throughout the year, and invite you to advanced previews of new models.

To find out more, please enquire with your preferred Aston Martin dealer.



EMPHATIC DESIGN,
ENDURING APPEAL.
A TRULY SPECIAL
ASTON MARTIN.





IMPORTANT NOTICE

Pictures and word mark

The car illustrated in this brochure may include additional options not featured in this brochure or that are only available at extra cost. The car may be fitted with accessories and other equipment not included in the price. The use of any such marks is under licence.

Updates

Asion Martin Lagonda Limited is constantly seeking ways to improve the performance of its cars and alterations take place continually. Whilst every effort is made to produce up-to-date information, it is not possible to be regarded as an infallible guide to current products, options, accessories or specifications, nor does it constitute any offer nor state of any particular car.

This brochure is merely an indication of the kinds of Asion Martin products and services which may be available from time to time. The contents of this brochure are not intended to constitute an offer. Asion Martin's business as a whole, text and photographs may relate to models, specifications, prices and accessories which are not available for sale in some countries or which have been superseded or are otherwise no longer available.

Performance results

Performance results, fuel consumption figures and CO₂ emissions data quoted in this brochure are obtained under controlled test conditions (in accordance with applicable regulations) and do not represent actual performance under real world conditions. Actual performance will vary depending on driving style, tyre choice, may also depend on the weight of the car, load and environmental conditions and specification of the particular car, and consumption, CO₂ emissions, the content and handling.

Full listed figures should be used for comparison purposes only and verification should not be attempted. Actual performance may vary from the results or implied performance of the car, fuel consumption or CO₂ emissions.

Asion Martin Lagonda Limited strongly urges that all speed laws be obeyed and that safety belts be worn at all times.

The weight of the car will influence performance. Higher CO₂ emissions may result, cars with higher levels of specification and factory fit options may emit higher levels of CO₂. Actual performance may vary depending on driving style, tyre choice, may also depend on the weight of the car, load and environmental conditions and specification of the particular car, and consumption, CO₂ emissions, the content and handling. All petrol engines are fitted with a catalytic converter.

Copyright and other intellectual property rights

This brochure and its contents are protected by various intellectual property rights, including without limitation, copyright, design rights and other intellectual property rights, and used by Asion Martin. You may not copy or use this brochure or any of its contents for any commercial purpose without our prior written consent.

Distributors and dealers

Distributors and dealers are not agents of Asion Martin Lagonda Limited and have absolutely no authority to bind Asion Martin Lagonda Limited in any way, express or implied, undertaking or representation. Sales by dealers or agents are subject to their terms and conditions of sale.

Company details

Asion Martin Lagonda Limited
(company number 011992259)
has its registered office at
Bankers Road, Gaydon, Warwickshire
CV35 9DF, England.
Registered office: Bankers Road,
Gaydon, Warwickshire, CV35 9DF
VAT Number: 901 447 237
www.asionmartin.com
Part no: 709802

Design and production

Identity Ltd (London)

Photography

Domonic Fraser and Max Elang



ASTON MARTIN

WWW.ASTONMARTIN.COM